




**AIR-SUPPORTED**  
STRUCTURES

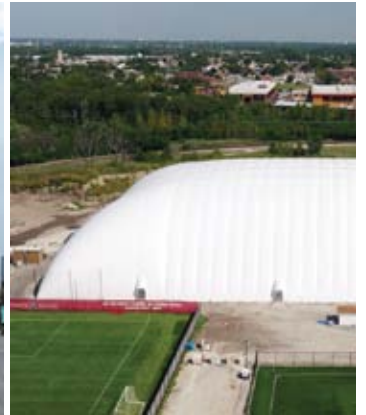
As a manufacturer, supplier, installer, and service provider of air-supported structures, we work with you from conception to implementation and beyond.

Our company philosophy is built around the belief that a customer never leaves The Farley Group®. From project planning and installation to ongoing service and maintenance, we become a trusted member of your team.





Our expert staff of sales consultants, designers, and highly skilled production and service professionals are well experienced in all facets of air structure technology, ready to help you through every phase of your dome project.





Located just west of Toronto, our manufacturing facility is a 58,000 square foot air-supported structure that features a state-of-the-art electronic radio frequency welding platform.



Our in-house design professionals work closely with our manufacturing team to ensure the optimum degree of dimensional accuracy is achieved in every structure we produce. Together with our network of trusted suppliers, we aim to provide you with an end product that meets the highest quality standards and your scheduling requirements.



320' x 200' x 60'

LEXUS VELODROME • Detroit, MI





BO JACKSON'S ELITE SPORTS • Hilliard, OH

460' x 230' x 70'





MILTON TENNIS DOME • Milton, ON

252' x 122' x 37'







315' x 250' x 75'

SENECA COLLEGE • North York, ON



BARRIE NORTH WINTER TENNIS • Midhurst, ON

198' x 114' x 36'







MARKHAM SPORTS DOME • Markham, ON

320' x 220' x 68'



280' x 190' x 64'

LE DOME DU WEST ISLAND • Kirkland, QC





308' x 148' x 45'

HASTINGS FIELD HOUSE • Hastings, ON



THE BOULEVARD CLUB • Toronto, ON

118' x 100' x 40'











## SERVICE & MAINTENANCE



## INDUSTRY LEADING EXPERIENCE AND EXPERTISE

We have the most extensive and qualified staff of fully insured service technicians. Our team includes the most accomplished service professionals in the industry, offering our customers the expertise that comes with several hundred years of combined experience in the service and maintenance of air-supported structures. We're here to help you through whatever service and maintenance challenge comes your way.

## DOMES REPLACEMENT

When it comes time to replace your existing dome, you can trust The Farley Group® to help make the transition as smooth as possible. We'll custom manufacture a perfect fit to replace your existing membrane, making your facility look like new again.

The Farley Group has completed more membrane replacement projects than any other dome company, including many replacements that weren't originally installed by us.

## FULL RANGE OF SERVICES

The Farley Group® can help with all aspects of your dome's service requirements, including:

- turnkey installation services for new dome projects;
- seasonal installation and take-down;
- storage of seasonal domes;
- fabric repairs;
- mechanical equipment repairs and replacement – mechanical; technician on staff;
- 24 hour emergency service;
- component repairs, maintenance and upgrades;
- netting, walkways, and dividers;
- liner replacements;
- retrofits for energy efficiency – insulation and LED lighting systems

CARY LEEDS CENTER FOR TENNIS & LEARNING • Bronx, NY

2 - 250' x 123' x 40'









ROOSEVELT ISLAND RACQUET CLUB • Roosevelt Island, NY

4 crt - 220' x 111' x 36'



360' x 218' x 65'

UNIVERSITY OF OTTAWA • Ottawa, ON













RUSSELL TOWNSHIP SPORTS DOME • Embrun, ON

330' x 180' x 54'





JERICHO TENNIS CLUB • Vancouver, BC

2-230' x 106' x 36 • 229' x 100' x 32'







TOTAL SPORTS COMPLEX • Rossford, OH

350' x 240' x 75'







237' x 114' x 36'

WEST VANCOUVER TENNIS CLUB • West Vancouver, BC









250' x 200' x 60' • 387' x 250' x 75'

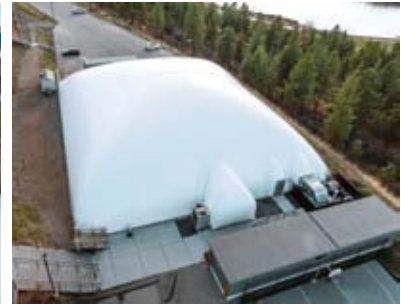
WHITBY IROQUOIS SOCCER • Whitby, ON







## ABERDEEN HALL PREPARATORY SCHOOL HALL • Kelowna, BC



120' x 111' x 32'

STADIUM TENNIS CENTER AT MILL POND PARK • Bronx, NY

361' x 208' x 65'







430' x 250' x 80'

MONARCH PARK STADIUM • Toronto, ON

















BO JACKSON'S ELITE SPORTS • Lockport, IL

400' x 220' x 66'







375' x 88' x 44'

TORONTO SOCCERPLEX (ENIROX) • North York, ON





AFRIM'S SPORTS BETHLEHEM • Glenmont, NY

250' x 175' x 55'





RICHMOND GREEN SPORTS DOME • Richmond Hill, ON

375' x 250' x 75'









HOLLYBURN COUNTRY CLUB • West Vancouver, BC



205' x 124' x 40' • 207' x 123' x 38'











196' x 103' x 31'

MENTOR COLLEGE • Mississauga, ON



L'AMOREAUX PARK TENNIS CENTRE • Scarborough, ON

257' x 115' x 34'







473' x 236' x 72'

UNIVERSITY OF ALBERTA FOOTBALL FIELD • Edmonton, AB

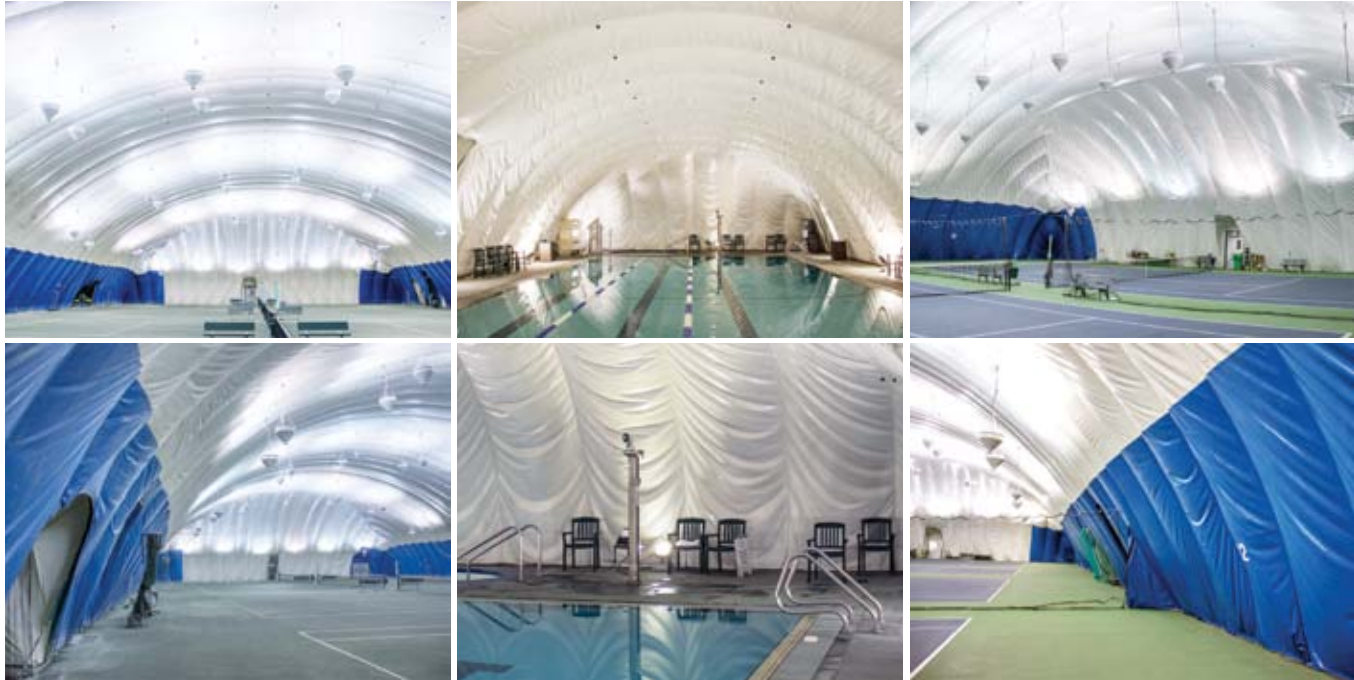




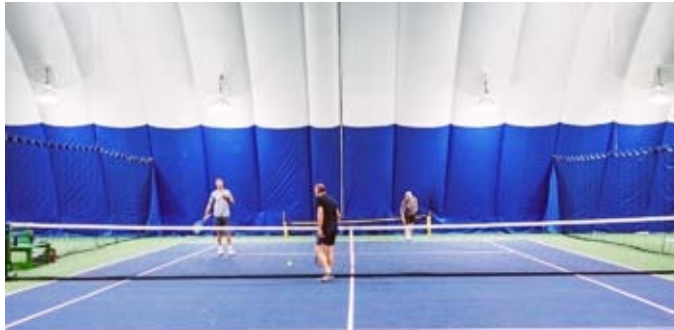
VANCOUVER LAWN & TENNIS CLUB • Vancouver, BC



207' x 115' x 36' • 197' x 117' x 36' • 89' x 45' x 18'









217' x 124' x 40'

MOUNT JOY SPORTS DOME • Markham, ON





490' x 245' x 75'

SPARTA SPORTS DOME • Crown Point, IN
















We confidently stand behind our products and craftsmanship, so you can rest easy knowing that our five year fabrication warranty has you covered. Every component included in your air structure package is covered by manufacturers' warranties which we monitor for full compliance and customer satisfaction.

**Throughout the process, The Farley Group is here to help along the way. You can research at your own pace in our digital resource library, and when you're ready, reach out to us to discuss how to make your unique dome vision a reality.**



**THE FARLEY GROUP®**

6 Kerr Crescent • Puslinch • ON CANADA N0B 2J0

TEL: 519.821.5422 | TOLL FREE: 1.888.445.3223 | FAX: 519.821.5424

[info@thefarleygroup.com](mailto:info@thefarleygroup.com) | [thefarleygroup.com](http://thefarleygroup.com)